

Utility System Integration
Billing, forecasting, SCADA,
system operators, etc.



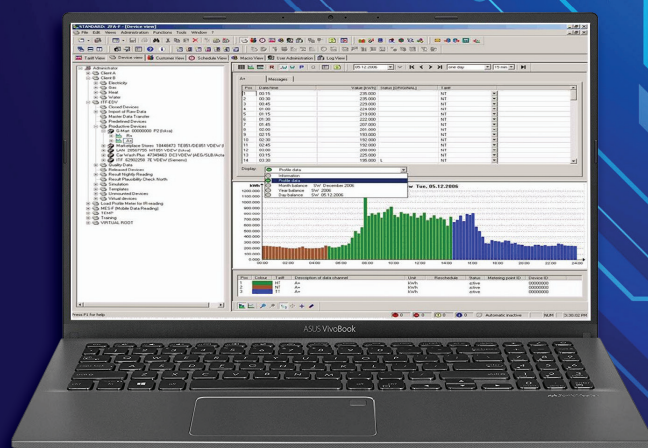
Automatic Meter Reading Software
Data Acquisition, Data Processing, Reporting
and monitoring, Power Quality Reporting,
Data exchange

Hand Held Units
Meter Parameterization

Communication
GSM, GPRS,
LAN/WAN, Serial, ...



Smart metering
Electricity



Automatic Meter Reading (AMR) Solution

A modern advanced meter management tool that supervises and controls real-time reading of electric energy consumption from a smart meter device and transfer that data in a centralized database for industrial, commercial, and grid metering usage.

Specifications

With our Meter Data Management (MDM) Solutions we can provide optimum support for Smart Metering. The following sectors are covered:

Data Reading

Individual device drivers enable communication with meters, measuring devices, and recorders independently from manufacturers via individual device drivers. The capability of the system is arbitrarily scalable via hardware extension.

Data Management

For this purpose different powerful databases (Oracle, MS-SQL-Server, and IBM Informix) in stand-alone mode and in multi-user mode are used. OBIS (Object Identification System) format and customer-, device-, or metering point-oriented. The

user administration enables the limitation of functions and data ranges up to the multi-client capability. The integrated redundant saving of measuring data (meter data / raw data / standardized data) guarantees maximum data security.

Data Evaluation

Flexible evaluation modules are used for the preparation and processing of measuring data for billing, energy data management, energy portfolio management, etc. Detailed statistics with automatic grouping of faulty devices simplify the monitoring of data communication and edit processes. Valid and correct data are guaranteed by automatic plausibility check and generation of substitute values.

Reliable data for manifold applications

AMRFLEX enhances the metering information system and provides a point-to-point reading of energy meters as a Head-End System (HES) component. Reading and evaluating meter readings, load profile data, meter reading sequences and measured value series are the core functions of an AMR system.

Status and logbook data from the metering device which are also essential to evaluate events are likewise read and applied for further analyses. Raw data is put into archives and reliably stored; this way you can consult original data any time.

Data Exchange

The fully automated data exchange to downstream systems is possible via the integrated macro control. The data is exchanged between the systems via flexible, configurable, or standardized data interfaces. Via individually configurable reports (Crystal Report) a data output in almost every data format or file format (doc, xls, PDF, XML, HTML...) is possible.

Automated Processes

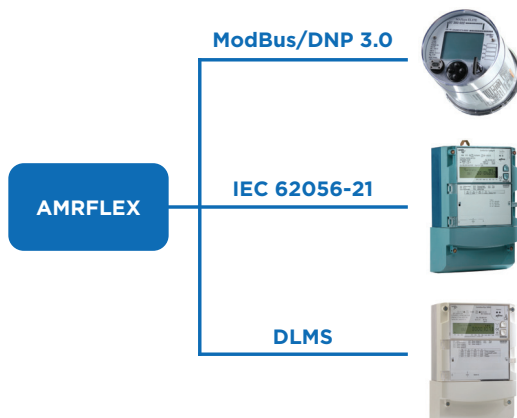
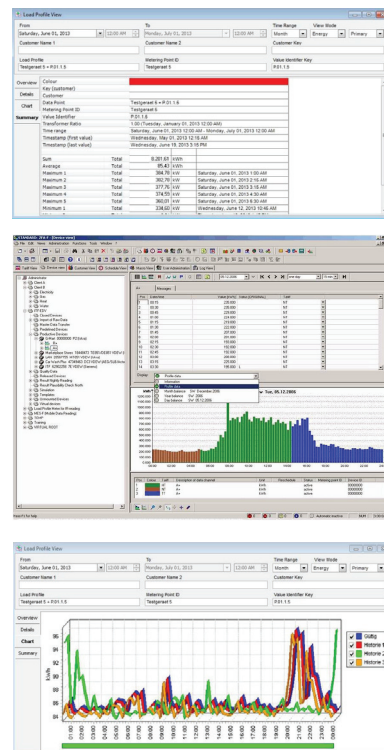
The processes data reading, plausibility check, data evaluation, and data transmission are fully automatable and can be adjusted by the user. In fact, a powerful schedule control tool helps you efficiently manage your meter data processes. The user can set the processes individually.

Intrinsic comprehensive features

Synergies are achieved as AMRFLEX

completely integrates as a metering system into the overall system thus providing optimum support of standardized interfaces for billing systems and jointly used market interfaces. Distributed data management is a thing of the past, simplified system administration and universal processes increase productivity as well as quality, hence significantly contributing to the reduction of costs in the field of energy data management.

Drivers provide protocols, data evaluation, and even user interfaces to display device details in AMRFLEX. Due to this combination of functions existing systems can be upgraded with drivers at any time, thus eliminating cost-intensive and time-consuming updates of software versions. Drivers are integrated into the system via a standardized interface.



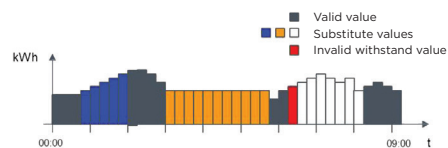
- More than 30 different data transfer protocols
- More than 300 device drivers
- Communication technologies
 - GSM
 - Ethernet
 - GPRS
 - IP-Telemetrie
 - ALL-IP
- Push and Pull Operation
- Reading and evaluation of meter values, load curve data, measured value sequences and power quality data
- Reading of the status logbook data of the meters

Numerous data management Modules

At the moment about 400 functions are implemented

Examples:

- Tariffing
- Limits / Schedules
- Calculations
- Automatic balancing
- Plausibility check
- Metering code
- Generation of substitute values
 - Manual, Automatic, Metering Code



Advantage:

- Customized System solution
- Extendable as desired

PPI Pazifik Power, Inc.

MAKATI HEAD OFFICE

4F- 6F South Park Plaza Building
Paseo de Magallanes Commercial Center
Makati City 1232
Metro Manila, Philippines

+63 2 8511 8888

+63 2 8836 4323

info@ppi.ph

CEBU

Unit 3 ASY Building
A.C. Cortez Ave.
Mandaue City 6014
Cebu, Philippines

+63 32 520 5523

+63 917 593 4338

cebu@ppi.ph

DAVAO

2nd Floor, Rm. 204, Bldg. 101
Buhangin Road
Km.5 Buhangin
Davao City 8000, Philippines

+63 917 592 1277

davao@ppi.ph

www.ppi.ph

PazifikPowerInc

PazifikPowerInc

/company/pazifikpowerinc